

ELEVATION TABLE

MBE IS MAIN FLOOR ELEVATION AS PER THE CURRENT COC
SUBDIVISION BYLAW.
GFE IS THE PROPOSED GARAGE FLOOR ELEVATION
BFE IS THE PROPOSED BASEMENT ELEVATION
*NOTE : ALL FLOORS BELOW THE MBE WILL REQUIRE A PUMP.

ON-SITE SERVICE CONNECTIONS

THE CITY OF CHILLIWACK REQUIRES A QUALIFIED ENGINEER TO INSPECT AND SIGN OFF ON ALL BUILDING CONNECTIONS MADE TO THE SITE SERVICES SHOWN ON THESE DRAWINGS. IT SHALL BE THE BUILDING CONTRACTOR'S RESPONSIBILITY TO RETAIN THE SERVICES OF A PROFESSIONAL ENGINEER FOR THIS PURPOSE FOR EACH BUILDING AT BP STAGE.

BEFORE YOU DIG

INFORMATION ON THE DRAWINGS REGARDING EXISTING UTILITIES WAS COMPILED FROM MUNICIPAL RECORD DRAWINGS AND FIELD SURVEYS. THIS INFORMATION IS NOT NECESSARILY ACCURATE OR COMPLETE. IT IS THE CONTRACTOR'S RESPONSIBILITY TO VERIFY ALL DATA BY EXPOSURE PRIOR TO ANY CONSTRUCTION AND TO IMMEDIATELY REPORT ANY DISCREPANCIES TO WEDLER ENGINEERING. PRIOR TO CONSTRUCTION, ALL TIE-IN INVERTS SHALL BE CONFIRMED, AND EXPOSURES PERFORMED WHERE THERE IS POTENTIAL FOR CONFLICTS BETWEEN EXISTING AND PROPOSED SERVICES. ANY COSTS RESULTING FROM THE CONTRACTOR'S FAILURE TO DO SO SHALL BE AT THE CONTRACTOR'S EXPENSE.



- 35mm ASPHALT SURFACE COURSE
- 40mm ASPHALT BASE COURSE
- MIN 100mm OF COMPACTED 19mm CRUSHED GRANULAR BASE
- MIN 300mm OF COMPACTED 75mm SELECT GRANULAR SUB-BASE
- COMPACTED IMPORTED OR APPROVED NATIVE EMBANKMENT FILLS AS REQUIRED
- REINFORCING LOGS, OR ANE ORGANIC SUBGRADE MATERIALS TO EXPOSE NATURAL GRANULAR SUBGRADE PRIOR TO SUB-BASE CONSTRUCTION
- STRUCTURE MATERIALS, THICKNESS OF MATERIALS, CUTS, FILLS, COMPACTION, SUBGRADE, ETC. TO BE REVIEWED AND APPROVED BY GEOTECHNICAL ENGINEER

NOTES

GENERAL

3. THE GOVERNING JURISDICTION FOR THIS PROJECT IS THE CITY OF CHILLIACK.
2. ALL WORKS, MATERIALS AND TESTING SHALL BE IN ACCORDANCE WITH THE CURRENT BYLAWS OF THE GOVERNING JURISDICTION, THE MASTER MUNICIPAL CONSTRUCTION DOCUMENTS (PRINTED 2009 "PLATINUM" EDITION) (MMCD) AND THE B.C. PLUMBING CODE AS APPLICABLE.
3. FOR SITE DIMENSIONS, REFER TO LEGAL SURVEY PLANS. FOR BUILDING LAYOUT DIMENSIONS, REFER TO ARCHITECTURAL PLANS. ALL ELEVATIONS ARE SHOWN IN METERS RELATED TO GEODETIC SURVEY OF CANADA. UNLESS OTHERWISE NOTED, ALL DIMENSIONS ARE SHOWN IN METERS AND ALL PIPE DIAMETERS ARE SHOWN IN MILLIMETERS.
4. SEE MMCD STANDARD DRAWINGS G1, G2 & G3 FOR GENERAL, MATERIALS & LIGHTING LEGENDS.
5. PRIOR TO CONSTRUCTION, THE CONTRACTOR SHALL PROVIDE TO WEDLER ENGINEERING A DIGITAL VIDEO AND PHOTOGRAPHIC RECORD IDENTIFYING ANY AND ALL EXISTING FEATURES TO BE DISTURBED. THE CONTRACTOR SHALL RESTORE ALL DISTURBED PAVEMENT, CURBS, SIDEWALKS, BOULEVARDS, LANDSCAPING, FENCES OR ANY OTHER FEATURES AFFECTED BY THE WORK IN COMPLIANCE WITH THE SPECIFICATIONS OF THE GOVERNING JURISDICTION, MMCD AND ANY RECOMMENDATIONS OF THE GEOTECHNICAL ENGINEER AND TO THE SATISFACTION OF THE GOVERNING JURISDICTION AND WEDLER ENGINEERING.
6. THE CONTRACTOR MUST CONTACT THE GOVERNING JURISDICTION AND WEDLER ENGINEERING PRIOR TO CONSTRUCTION TO SCHEDULE A PRE-CONSTRUCTION MEETING.
7. THE CONTRACTOR SHALL NOTIFY WEDLER ENGINEERING A MINIMUM OF 2 WORKING DAYS PRIOR TO REQUIRED INSPECTIONS INCLUDING, BUT NOT LIMITED TO THE FOLLOWING:
 - A) MOBILIZATION
 - B) DURING PIPE LAYING
 - C) DURING CONSTRUCTION OF DETENTION FACILITIES
 - D) DURING PREPARATION OF PAVEMENT STRUCTURE
 - E) TESTING OF ALL UTILITIES
 - F) AFTER COMPLETION OF ALL WORK
8. THE CONTRACTOR SHALL BE RESPONSIBLE FOR ALL CONSTRUCTION LAYOUT. CONFIRM BENCH MARK OR TEMPORARY BENCH MARK PRIOR TO CONSTRUCTION. ADVISE WEDLER ENGINEERING OF ANY DISCREPANCIES.
9. ANY VARIATIONS FROM THE PROPOSED WORK MUST BE APPROVED IN WRITING BY WEDLER ENGINEERING. FAILURE TO NOTIFY WEDLER ENGINEERING IN ADVANCE MAY RESULT IN REJECTION OF THE WORK. SUBSTITUTION OF ANY SPECIFIED MATERIALS, PRODUCTS OR EQUIPMENT WITH AN APPROVED EQUAL OR APPROVED EQUIVALENT WILL BE PERMITTED ONLY WITH THE EXPRESS WRITTEN APPROVAL OF WEDLER ENGINEERING, AT ITS DISCRETION.
10. THE CONTRACTOR SHALL ADJUST THE TOPS OF ALL ACTIVE MANHOLES, CATCH BASINS, VALVE BOXES, ETC. AS REQUIRED TO MATCH NEW GRADING.
11. ALL TRENCH BACKFILL WITHIN PUBLIC RIGHTS-OF-WAY TO BE IMPORTED GRANULAR BACKFILL UNLESS OTHERWISE APPROVED BY THE GEOTECHNICAL ENGINEER.
12. CONNECTIONS TO EXISTING STORM AND SANITARY SEWERS TO BE MADE WITH METHODS AND MATERIALS APPROVED BY THE GOVERNING JURISDICTION. APPROVAL TO BE OBTAINED BEFORE INSTALLATION.
13. THE CONTRACTOR SHALL BE SOLELY RESPONSIBLE FOR CONSTRUCTION SAFETY AT THE PLACE OF WORK AS AND TO THE EXTENT REQUIRED BY APPLICABLE CONSTRUCTION SAFETY LEGISLATION, REGULATIONS AND CODES, AND BY GOOD CONSTRUCTION PRACTICE. THE CONTRACTOR SHALL PERFORM ITS WORKS IN STRICT COMPLIANCE WITH THE REQUIREMENTS, RULES, REGULATIONS AND BY-LAWS OF ANY FEDERAL, PROVINCIAL OR MUNICIPAL AUTHORITY HAVING JURISDICTION. THE CONTRACTOR SHALL APPLY FOR AND OBTAIN ALL REQUIRED PERMITS.
14. THE CONTRACTOR SHALL MAINTAIN AND REPAIR ALL PUBLIC AND PRIVATE ROADS AFFECTED BY THE WORK AND ARRANGE FOR ADEQUATE STREET CLEANING DURING WORKING DAYS.
15. THE CONTRACTOR SHALL PREPARE A TRAFFIC MANAGEMENT PLAN FOR APPROVAL BEFORE START OF CONSTRUCTION. TRAFFIC MANAGEMENT PLAN TO BE IN ACCORDANCE WITH THE GOVERNING JURISDICTION'S REGULATIONS. AS A MINIMUM, ONE LANE TRAFFIC MUST BE MAINTAINED AND KEPT OPEN AT ALL TIMES.
16. THE CONTRACTOR SHALL CARRY OUT THE WORK SO AS TO MINIMIZE THE INCONVENIENCE TO THE PUBLIC. THE CONTRACTOR SHALL PROVIDE AND MAINTAIN SERVICES AND ACCESS TO RESIDENCES AND BUSINESSES AT ALL TIMES FOR VEHICLES AND PEDESTRIANS. ANY DISRUPTIONS THAT ARE UNAVOIDABLE WILL REQUIRE A MINIMUM NOTICE OF 2 WORKING DAYS BE GIVEN TO PROPERTY OWNERS, THE GOVERNING JURISDICTION AND WEDLER ENGINEERING.
17. THE CONTRACTOR SHALL RECORD ON A CURRENT SET OF PLANS IN A NEAT MANNER, ALL CHANGES, ADDITIONS AND DELETIONS TO REFLECT THE "AS CONSTRUCTED" INSTALLATION. THIS SET OF PLANS SHALL BE RETURNED TO WEDLER ENGINEERING AT THE COMPLETION OF THE WORKS AND PRIOR TO THE ISSUANCE OF SUBSTANTIAL PERFORMANCE. ANY ADDITIONAL SURVEY REQUIRED TO COMPLETE THE RECORD DRAWINGS WILL BE THE RESPONSIBILITY OF THE CONTRACTOR.

EXISTING STRUCTURES, UTILITIES AND PROPERTIES

1. INFORMATION ON THE DRAWINGS REGARDING EXISTING UTILITIES WAS COMPILED FROM RECORD DRAWINGS, CONSTRUCTION DRAWINGS AND FIELD SURVEYS. THIS INFORMATION IS NOT NECESSARILY ACCURATE OR COMPLETE. IT IS THE CONTRACTOR'S RESPONSIBILITY TO VERIFY ALL DATA BY EXPOSURE BEFORE ANY CONSTRUCTION AND TO IMMEDIATELY NOTIFY THE OWNER OF ANY DISCREPANCY TO THE RECORD DRAWINGS. THE CONTRACTOR SHALL BE RESPONSIBLE FOR ANY EXPOSURES PERFORMED WHERE THERE IS POTENTIAL FOR CONFLICTS BETWEEN EXISTING AND PROPOSED SERVICES. ANY COSTS RESULTING FROM THE CONTRACTOR'S FAILURE TO DO SO SHALL BE AT THE CONTRACTOR'S EXPENSE.
2. BEFORE CONSTRUCTION THE CONTRACTOR SHALL ASCERTAIN FOR HIMSELF THE EXACT LOCATION OF BOUNDARIES OF PROPERTIES, RIGHTS-OF-WAY OR EASEMENTS. ANY COST RESULTING FROM SPECIAL CONSTRUCTION METHODS, EQUIPMENT OR MATERIALS REQUIRED TO CONSTRUCT WITHIN THE BOUNDARIES OF ANY PROPERTY OR EASEMENT OR RIGHT-OF-WAY, SHALL BE INCLUDED IN THE CONTRACT PRICE, AND NO ADDITIONAL PAYMENT WILL BE MADE FOR SUCH COSTS.

COORDINATION WITH OTHER WORK

1. CONTRACTOR TO IMMEDIATELY REPORT (TO WEDLER ENGINEERING AND OTHERS AS REQUIRED) ANY CONFLICTS, DISCREPANCIES, ETC. BETWEEN WORKS SHOWN ON WEDLER ENGINEERING PLANS AND WORKS SHOWN ON ANY OTHER PLANS.

WATERWORKS

1. THE COMPLETED SERVICE SHALL BE DISINFECTED ACCORDING TO AWWA STANDARD C651, OR LATEST REVISION THEREOF.
2. CURRENT PROCEDURES OF THE GOVERNING JURISDICTION FOR ACCEPTANCE AND TIE-IN OF NEW WATERMAINS SHALL BE FOLLOWED.

STORM SEWERS & SANITARY SEWERS

1. THE PIPE DISTANCES SHOWN ON STORM AND SANITARY SEWER DRAWINGS ARE MEASURED HORIZONTALLY FROM MANHOLE CENTERLINE TO MANHOLE CENTERLINE.

QUALITY CONTROL

1. ALL TESTING SHALL BE PERFORMED BY INDEPENDENT AND CERTIFIED TESTING AGENCIES AT THE CONTRACTOR'S COST.
2. ALL REQUIRED TESTING OF THE SUBGRADE, EMBANKMENT, BACKFILL, GRANULAR MATERIALS, COMPACTION, CONCRETE, ASPHALT, GROWING MEDIUM, ETC. IS THE RESPONSIBILITY OF THE CONTRACTOR AND AT THE CONTRACTOR'S COST.
3. ALL CLEANING, FLUSHING, PRESSURE AND LEAKAGE TESTING, VIDEO INSPECTION, DISINFECTION AND BACTERIOLOGICAL TESTING AS REQUIRED FOR WATER, SANITARY AND DRAINAGE SYSTEMS ARE AT THE CONTRACTOR'S COST.
4. MATERIAL TESTS SHALL BE PERFORMED AT THE MINIMUM FREQUENCIES / INTERVALS AS PER THE GOVERNING JURISDICTION'S REGULATIONS, OR AS PER "WEDLER MINIMUM MATERIAL TEST FREQUENCIES", WHICHEVER IS GREATER.
5. IN ADDITION TO THE REQUIREMENTS OF THE GENERAL CONDITIONS, THE CERTIFICATE OF SUBSTANTIAL PERFORMANCE WILL NOT BE ISSUED PRIOR TO RECEIPT BY WEDLER ENGINEERING OF COPIES OF ALL REQUIRED CERTIFICATES, INSPECTION AND TESTING REPORTS.

GEOTECHNICAL AND GEOSYNTHETICS

1. DESIGN AND CONSTRUCTION OF ALL SLOPES AND RETAINING WALLS TO BE CERTIFIED BY THE GEOTECHNICAL ENGINEER.
2. ALL GEOSYNTHETICS TO BE REVIEWED AND APPROVED BY THE GEOTECHNICAL ENGINEER.

PROJ. MGR.	JKV
DESIGN/DRAWN	CAJ
PEER REVIEWED	
HORIZ. SCALE	1:250
VERT. SCALE	1:50



THE WEDLER GROUP

- **Abbotsford**
1.604.746.0300
- **Chilliwack**
1.604.792.0651
- **Courtenay**
1.250.334.3263
- **Surrey**
1.604.588.1919

FREEDOM CONSTRUCTION
8 LOT STRATA
43730 OLD ORCHARD RD
KEY PLAN

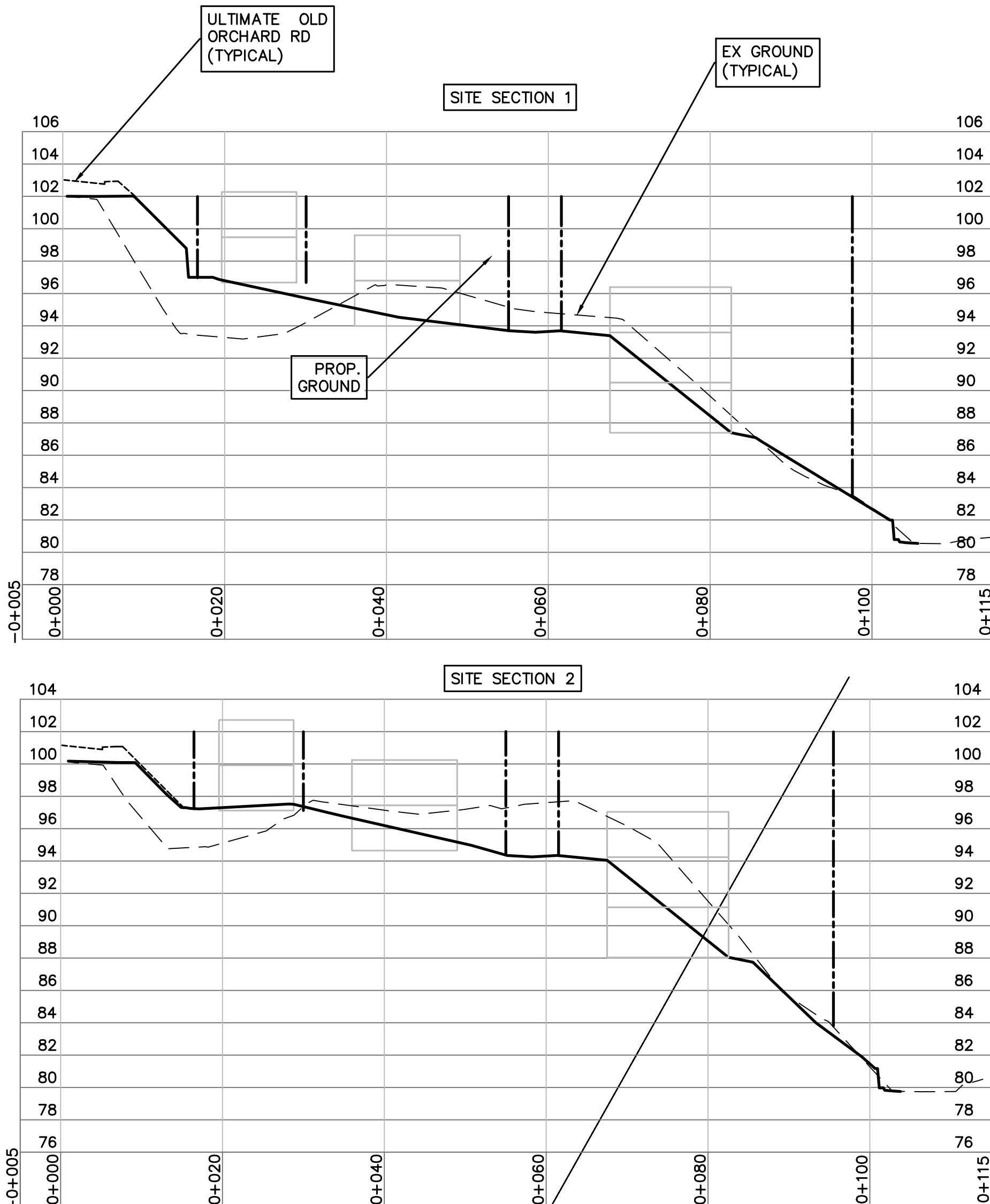
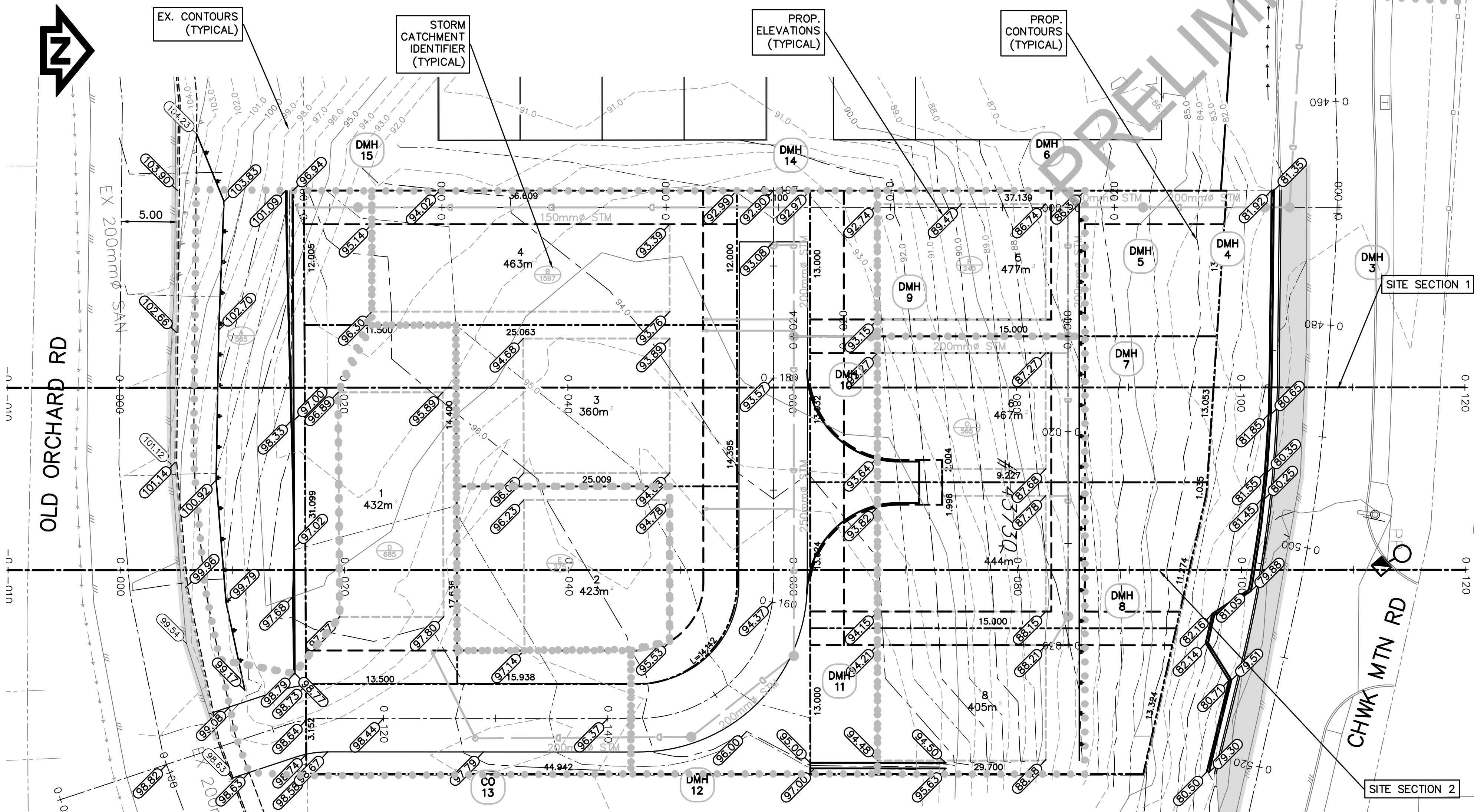
DRAWING NO.		OF	—5—
C17-5512/A-01			
LOCAL GOVERNMENT FILE —FILE—			
PHASE		REVISION	
		.A.	



DESIGN RETURN PERIOD: 10 year / 100 year

Based on the Agassiz Rainfall IDF Curve

Pipe Run Info			Drainage Area Parameters					IDF Info.		Flow Calculations		Pipe Design									
Manhole		Length L (m)	Catchment Identifier	Catch. Area A (m²)	Runoff Coeff. R	Cumulative (R*A) (m²)	Cumulative Tc (minutes)	Intensities		1:10 year	1:100 year	Diameter D (mm)	Pipe Rough n	Slope S (%)	Pipe at Capacity		Time t (minutes)	Q10 HGL (%)	Q100 HGL (%)	Qcap-Q10 (m³/s)	Qcap-Q100 (m³/s)
From	To							I10 (mm/hr)	I100 (mm/hr)	Q10 (m³/s)	Q100 (m³/s)				Qcap (m³/s)	Vcap (m/s)					
D15	D14	38.8	A	565	0.70	396	15.00	26.35	35.07	0.003	0.004	150	0.011	2.10	0.026	1.476	0.44	0.03	0.05	0.023	0.022
D14	D10	11.5	B	1597	0.90	1833	15.44	26.03	34.64	0.013	0.018	200	0.011	1.00	0.039	1.234	0.16	0.12	0.21	0.026	0.021
D8	D7	25	C	565	0.90	722	15.00	26.35	35.07	0.005	0.007	150	0.011	4.00	0.036	2.037	0.20	0.09	0.15	0.031	0.029
D13	D12	19.25	D	669	0.70	468	15.00	26.35	35.07	0.003	0.005	200	0.011	9.88	0.122	3.878	0.08	0.01	0.01	0.118	0.117
D12	D11	11.7		0	0.70	468	15.08	26.29	34.98	0.003	0.005	200	0.011	11.43	0.131	4.171	0.05	0.01	0.01	0.128	0.126
D11	D10	28.5	E	275	0.90	716	15.13	26.25	34.94	0.005	0.007	200	0.011	2.97	0.067	2.126	0.22	0.02	0.03	0.062	0.060
D10	D9	6.9		0	0.70	2549	15.35	26.09	34.72	0.018	0.025	200	0.011	1.70	0.051	1.609	0.07	0.23	0.40	0.032	0.026
D9	D7	17.6		0	0.70	2549	15.42	26.04	34.65	0.018	0.025	200	0.011	32.88	0.222	7.075	0.04	0.23	0.40	0.204	0.198
D7	D6	11.5	F	240	0.70	3439	15.47	26.01	34.61	0.025	0.033	200	0.011	3.48	0.072	2.302	0.08	0.41	0.73	0.047	0.039
D6	D5	6.7		0	0.70	3439	15.55	25.96	34.53	0.025	0.033	200	0.011	19.32	0.170	5.423	0.02	0.41	0.72	0.146	0.137
D5	D4	10.9		0	0.70	3439	15.57	25.94	34.51	0.025	0.033	200	0.011	30.80	0.215	6.847	0.03	0.41	0.72	0.190	0.182
D4	D3	2.2		0	0.70	3439	15.60	25.92	34.49	0.025	0.033	200	0.011	42.98	0.254	8.089	0.00	0.41	0.72	0.229	0.221
D3	D2	24.14		0	0.70	3439	15.60	25.92	34.48	0.025	0.033	250	0.011	0.50	0.050	1.012	0.40	0.12	0.22	0.025	0.017
D2	D1	46.01		0	0.70	3439	16.00	25.65	34.11	0.024	0.033	250	0.011	2.45	0.110	2.241	0.34	0.12	0.21	0.086	0.077
D1	EX 41140	7.2		950	0.90	4294	16.34	25.42	33.81	0.030	0.040	250	0.011	11.47	0.238	4.849	0.02	0.19	0.33	0.208	0.198



GRADING & RETAINING WALL NOTES

1. ALL EARTHWORKS, CUT SLOPES, FILL SLOPES, RETAINING WALLS AND OVERALL SITE GRADE DESIGNS ARE TO BE REVIEWED AND APPROVED BEFORE CONSTRUCTION BY THE GEOTECHNICAL ENGINEER OF RECORD FOR THE PROJECT. FURTHER, THE CONSTRUCTION OF THESE WORKS MUST BE FIELD REVIEWED AND SIGNED OFF BY THE GEOTECHNICAL ENGINEER BEFORE SUBSTANTIAL COMPLETION IS GRANTED FOR THE PROJECT.
2. RETAINING WALLS SUPPORTING ROADS, STRUCTURES, ETC. WITHIN LOTS, TO BE LOCATED ENTIRELY ON THE LOTS.
3. SEE GEOTECHNICAL DRAWINGS FOR SPECIFIC DETAILS FOR TYPE OF WALLS, TIE-BACKS, BATTER, BLOCK CONFIGURATION, DRAINAGE, ETC.
4. RETURN RETAINING WALLS TO SUIT.
5. INSTALL HANDRAIL AS PER MMD STD DWG C14, OR GUARD AS PER BUILDING CODE ON RETAINING WALLS EXCEEDING 600mm IN HEIGHT.
6. CONNECT RETAINING WALL DRAINAGE SYSTEMS TO PROPOSED STORM SEWER SYSTEMS.
7. ALL SLOPES TO BE VEGETATED UPON COMPLETION.
8. BACK YARDS TO BE SLOPED AT 2.0% AWAY FROM THE BUILDING.
9. THE LOT GRADING SHOWN HAS BEEN DETERMINED BASED ON THE BUILDINGS AND DRIVEWAYS BEING SIZED, LOCATED AND ELEVATED AS SHOWN, ASSUMING TYPICAL BUILDING PRACTICE.
10. DO NOT REVISE BUILDING AND/OR DRIVEWAY SIZES, LOCATIONS AND ELEVATIONS WITHOUT CONSULTING CITY BUILDING DEPARTMENT, ARCHITECT, CIVIL ENGINEER AND GEOTECHNICAL ENGINEER TO DETERMINE IMPACTS ON OTHER WORKS, EARTH WORKS, DRAINAGE AND RETAINING WALLS.
11. INDIVIDUAL LOT WALLS, GRADING IN ACCORDANCE WITH A LOT GRADING PLAN ACCEPTED BY THE CITY. NO RETAINING WALLS SHALL BE ALTERED OR RECONSTRUCTED ON INDIVIDUAL LOTS.
12. LAWN DRAINS AND AREAS SURROUNDING LAWN DRAINS TO BE GRADED TO PREVENT PONDING OF SURFACE WATER.

FOUNDATIONS

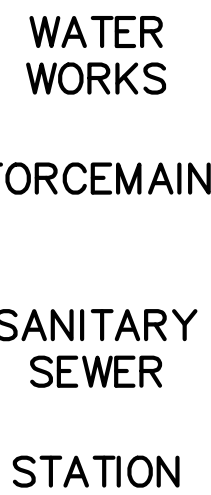
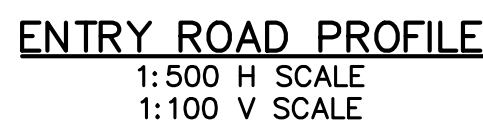
1. TOP OF CONCRETE SLAB / FOUNDATION STRUCTURE TO BE MINIMUM 0.2m HIGHER THAN EXTERNAL FINISHED ELEVATIONS.

STORM SERVICES

1. ALL RAIN WATER LEADERS, PERIMETER DRAINS, TRENCH DRAINS AND LAWN DRAINS FROM ALL LOTS TO BE CONNECTED TO THE STORM SEWERS UNLESS OTHERWISE INDICATED.
2. TRENCH DRAINS REQUIRED AS PART OF HOUSE CONSTRUCTION FOR DRIVEWAYS GRADED TOWARDS HOUSES.

2019 - WEDLER ENGINEERING LLP - ALL RIGHTS RESERVED - THIS DOCUMENT IS PROTECTED BY COPYRIGHT LAW AND MAY NOT BE REPRODUCED IN ANY MANNER, OR FOR ANY PURPOSE, EXCEPT BY WRITTEN PERMISSION OF COPYRIGHT HOLDER

PROGRESS PRINT - NOT FOR CONSTRUCTION



INFORMATION ON THE DRAWINGS REGARDING EXISTING UTILITIES WAS COMPILED FROM MUNICIPAL RECORD DRAWINGS AND FIELD SURVEYS. THIS INFORMATION IS NOT NECESSARILY ACCURATE OR COMPLETE. IT IS THE CONTRACTOR'S RESPONSIBILITY TO VERIFY THE EXISTENCE, LOCATION, DEPTH, AND SIZE OF ALL UTILITIES PRIOR TO CONSTRUCTION AND TO IMMEDIATELY REPORT ANY DISCREPANCIES TO WEDLER ENGINEERING. PRIOR TO CONSTRUCTION, ALL TIE-IN INVERTS SHALL BE CONFIRMED, AND EXPOSURES PERFORMED WHERE THERE IS POTENTIAL FOR CONFLICT BETWEEN EXISTING AND PROPOSED SERVICES. ANY COSTS RESULTING FROM THE CONTRACTOR'S FAILURE TO DO SO SHALL BE AT THE CONTRACTOR'S EXPENSE.

CHWIK MTN RD

3 30m

2 33m

6 467m

444m

8 405m

22.5" V. BEND

22.5" V. BEND

22121 VAULT AND 200" DCVA TO BE SUPPLIED AND INSTALLED BY CONTRACTOR. CONTRACTOR TO PROVIDE SHOP DRAWINGS FOR APPROVAL PRIOR TO INSTALALTION

22121 WATER METER VAULT TO BE SUPPLIED AND INSTALLED BY THE CONTRACTOR. 150" WATER METER TO BE INSTALLED BY THE CITY OF CHILLIWACK AT THE DEVELOPERS EXPENSE

1 - 200x200x150 HxFxF TEE
1 - 150" FXH GATE VALVE
1 - HYDRANT ASSEMBLY c/w STORZ ADAPTER
1 - 150" SPOOL PIECE
1 - 200x100 FXH REDUCER

1 - 11.25" H. BEND
1 - 45" V. BEND

UNDER PRESSURE BRANCHING TO BE PERFORMED BY THE CITY OF CHILLIWACK AT DEVELOPERS EXPENSE AFTER ALL TESTING HAS BEEN COMPLETED AND ACCEPTED

1:500 H SCALE
1:250 V SCALE



2019 - WEDLER ENGINEERING LLP - ALL RIGHTS RESERVED - THIS DOCUMENT IS PROTECTED BY COPYRIGHT LAW AND MAY NOT BE REPRODUCED IN ANY MANNER, OR FOR ANY PURPOSE, EXCEPT BY WRITTEN PERMISSION OF COPYRIGHT HOLDER

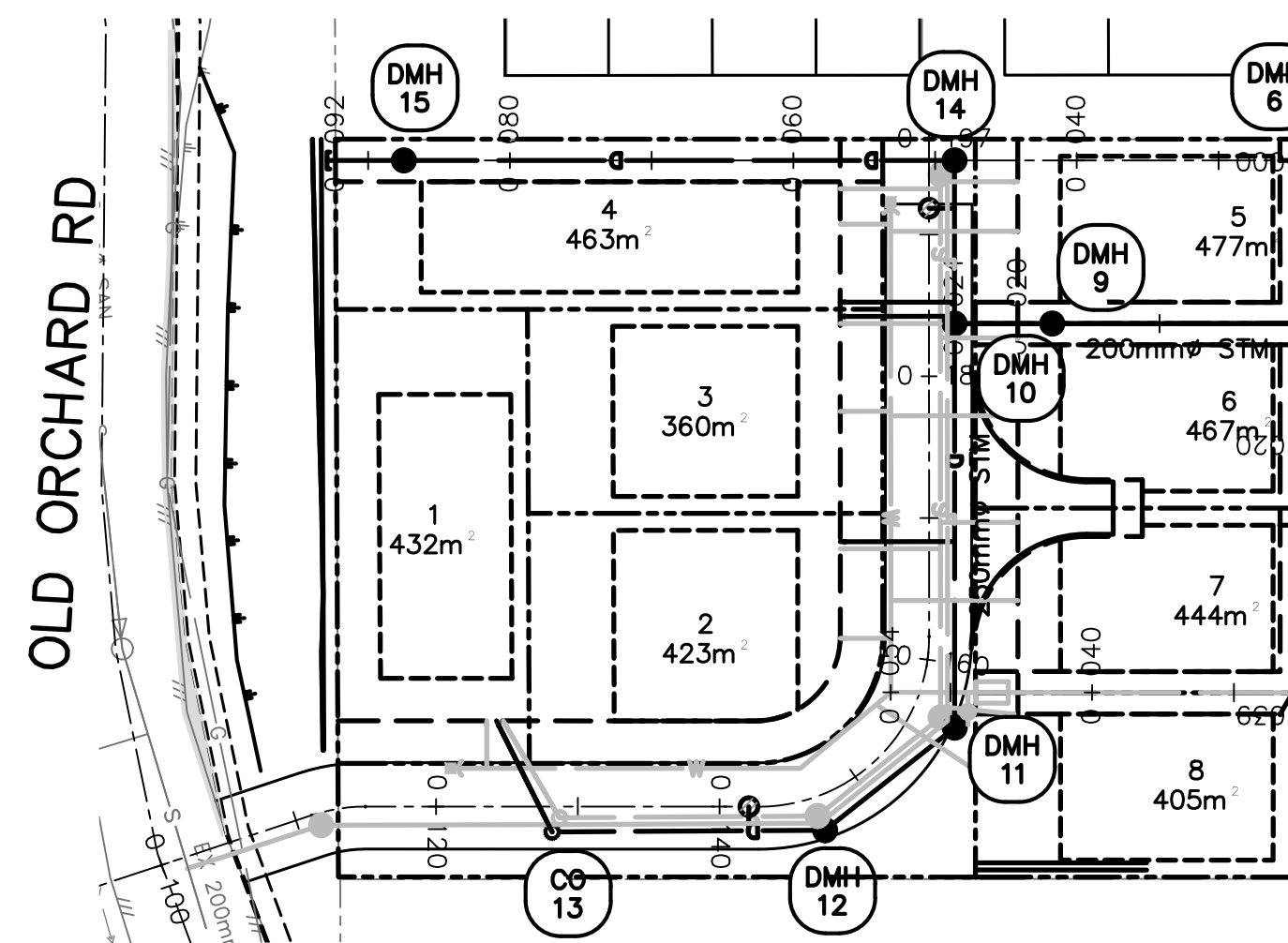


WEDLER
ENGINEERING

www.wedler.com

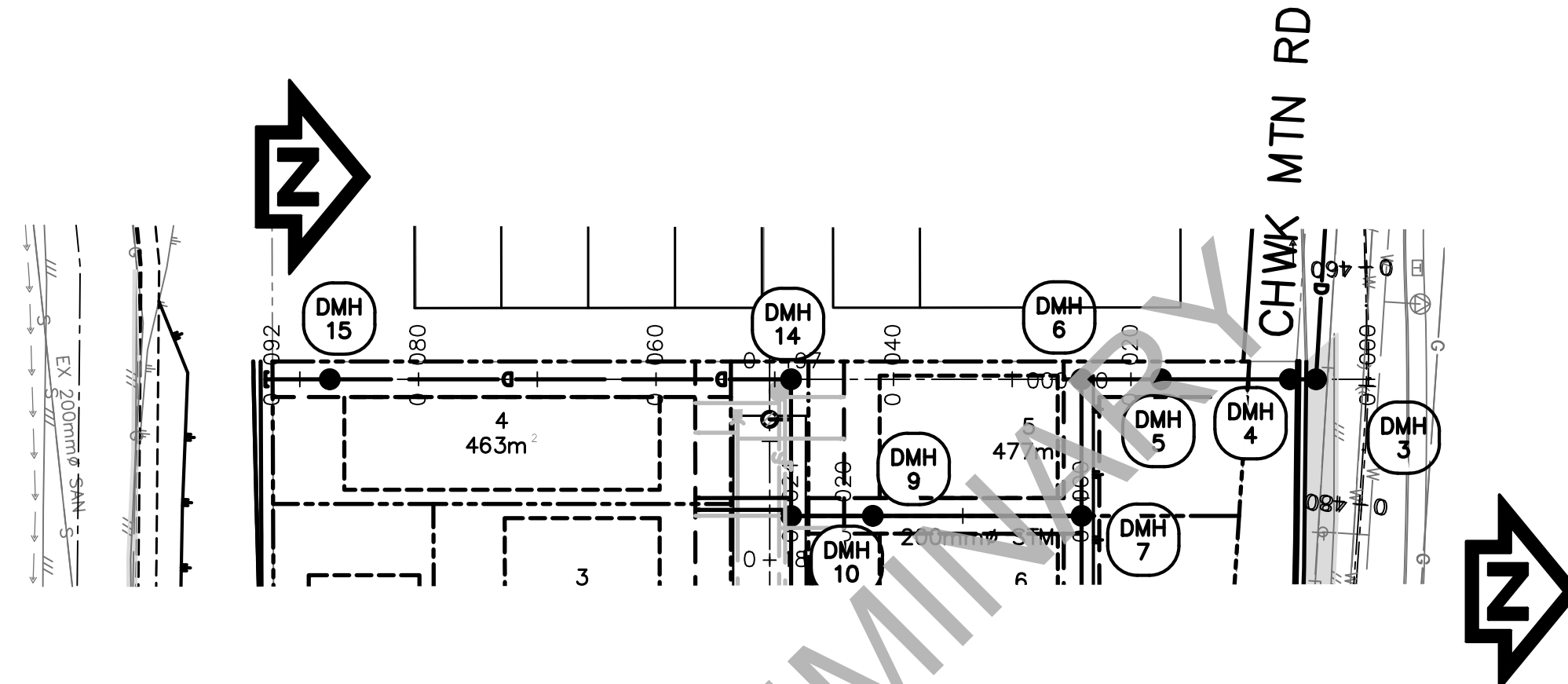
SANITARY AND WATER WORKS PLAN & PROFILE

DRAWING NO.		OF	-5-
C17-5512/A-03			
LOCAL GOVERNMENT FILE -FILE-			
PHASE		REVISION	
		A	

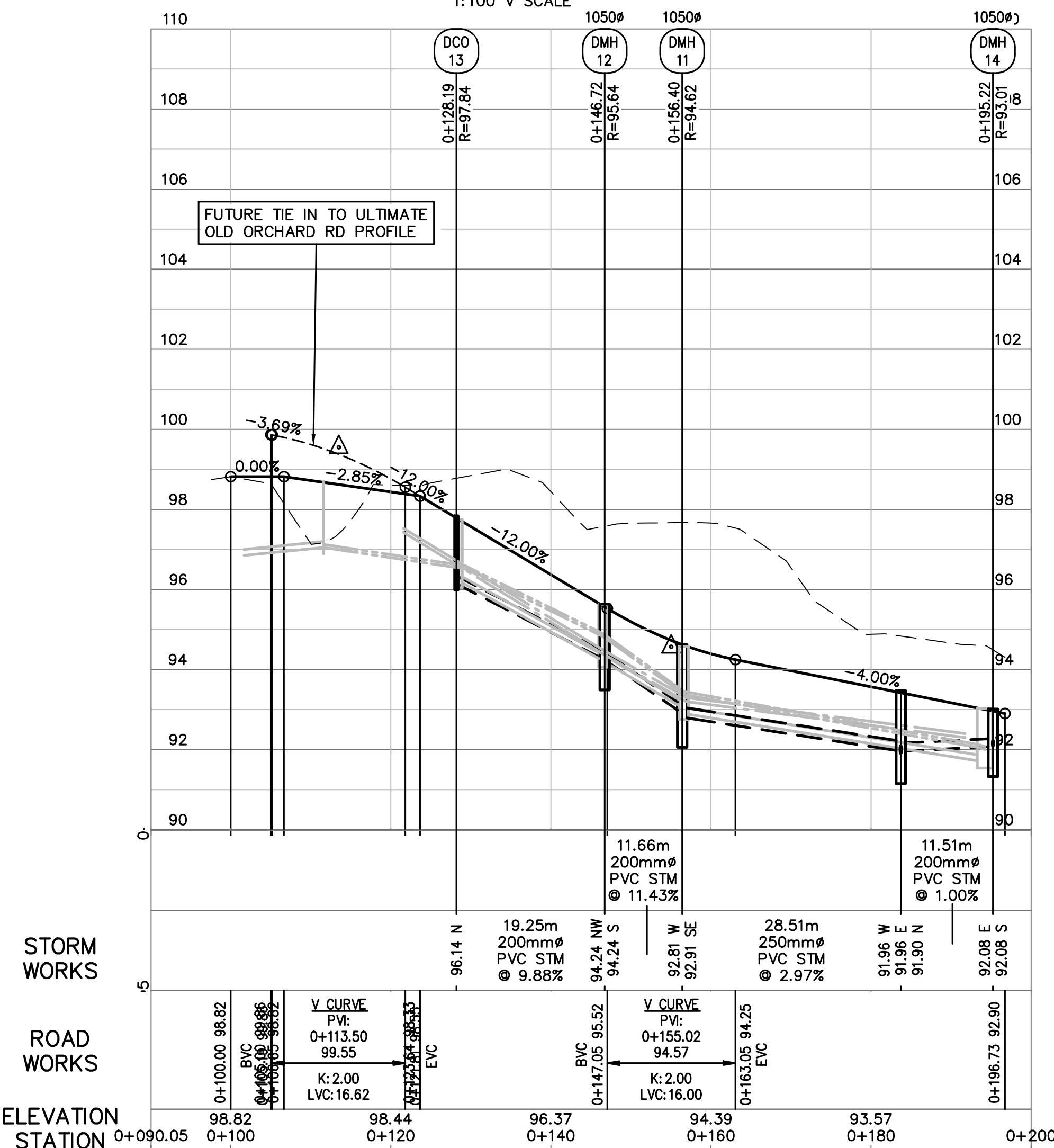


THE CITY OF CHILLIWACK REQUIRES A QUALIFIED ENGINEER TO INSPECT AND SIGN OFF ON ALL BUILDING CONNECTIONS MADE TO THE SITE SERVICES SHOWN ON THESE DRAWINGS. IT SHALL BE THE BUILDING CONTRACTOR'S RESPONSIBILITY TO RETAIN THE SERVICES OF A PROFESSIONAL ENGINEER FOR THIS PURPOSE FOR EACH BUILDING AT BP STAGE.

INFORMATION ON THE DRAWINGS REGARDING EXISTING UTILITIES WAS COMPILED FROM MUNICIPAL RECORD DRAWINGS AND FIELD SURVEYS. THIS INFORMATION IS NOT NECESSARILY ACCURATE OR COMPLETE. IT IS THE CONTRACTOR'S RESPONSIBILITY TO VERIFY ALL DATA BY EXPOSURE PRIOR TO ANY CONSTRUCTION AND TO IMMEDIATELY REPORT ANY DISCREPANCIES TO WEDLER ENGINEERING. PRIOR TO CONSTRUCTION, ALL TIE-IN INVERTS SHALL BE CONFIRMED, AND EXPOSURES PERFORMED WHERE THERE IS POTENTIAL FOR CONFLICTS BETWEEN EXISTING AND PROPOSED SERVICES. ANY COSTS RESULTING FROM THE CONTRACTOR'S FAILURE TO DO SO SHALL BE AT THE CONTRACTOR'S EXPENSE.

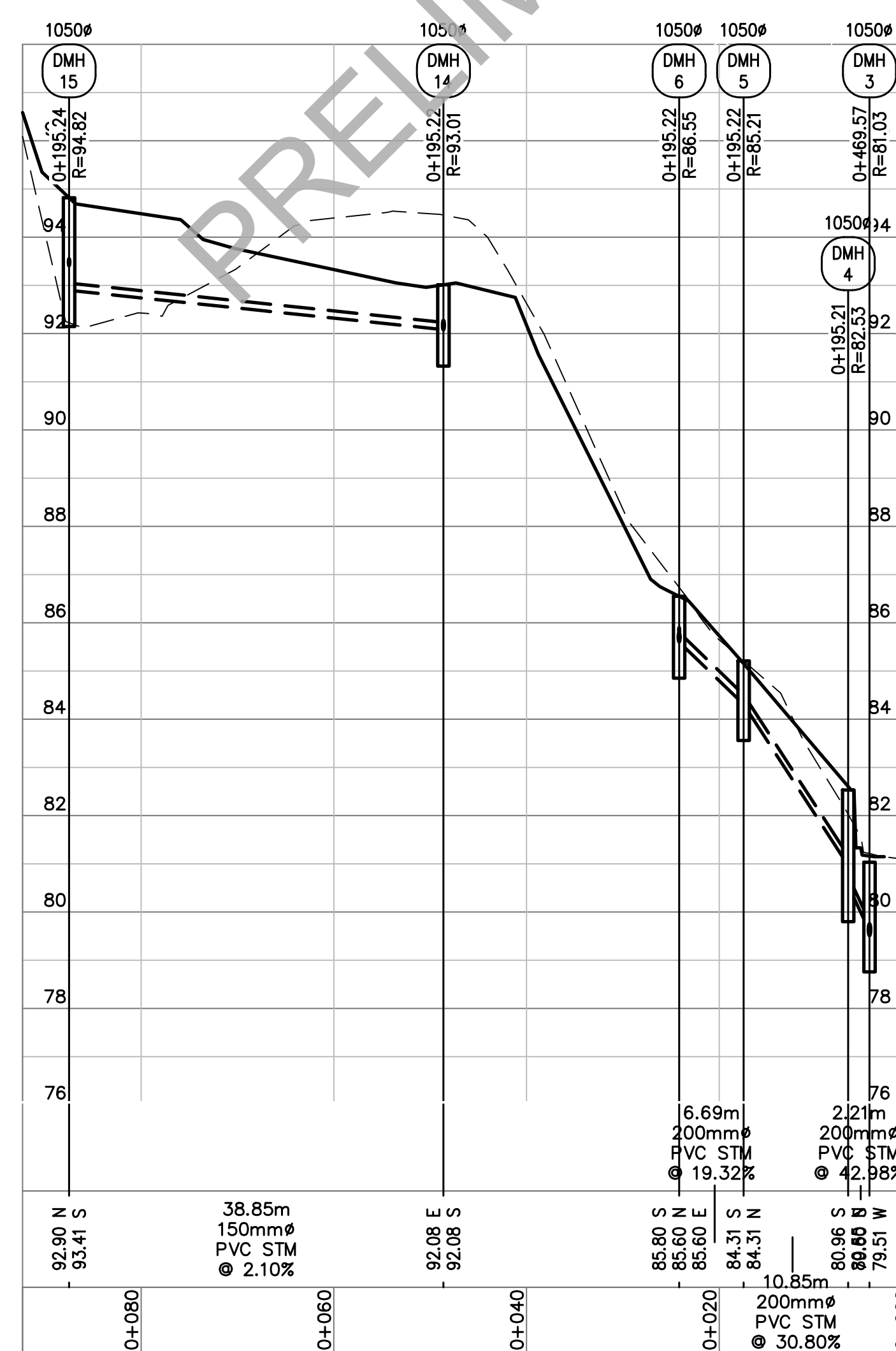


1:500 H SCALE
1:100 V SCALE



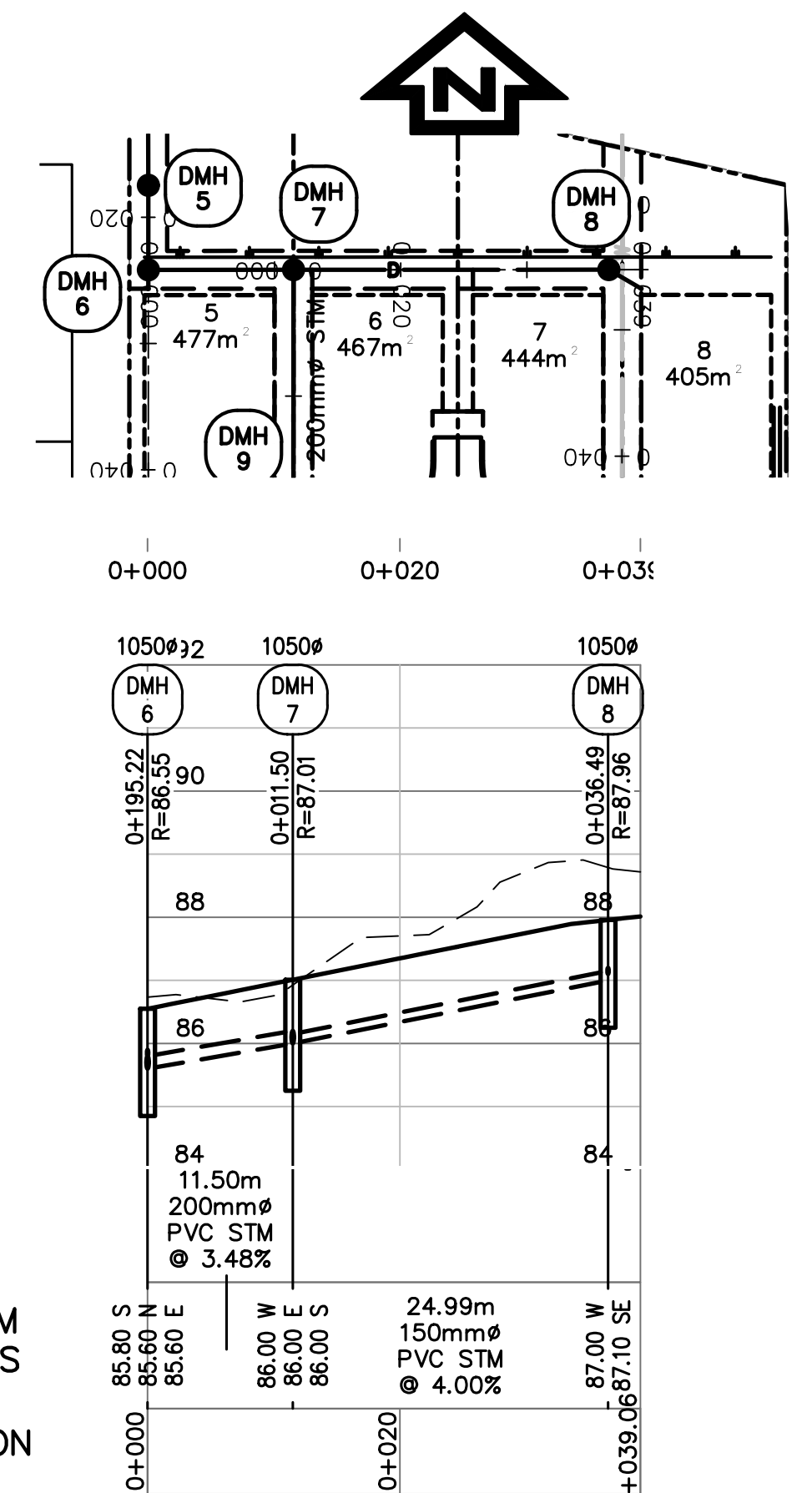
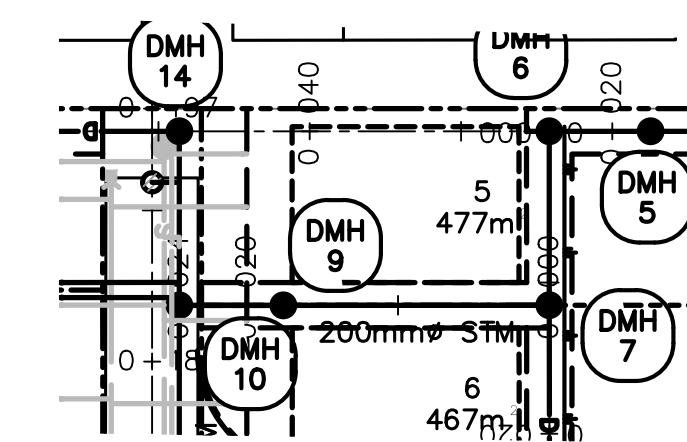
STORM
WORKS

ROAD WORKS

ELEVATION
STATION °

STORM
WORKS

STATION



STORM
WORKS

STATION

[illegible]

PROJ. MGR.	JKV
DESIGN/DRAWN	CAJ
PEER REVIEWED	
HORIZ. SCALE	1:500
VERT. SCALE	1:100

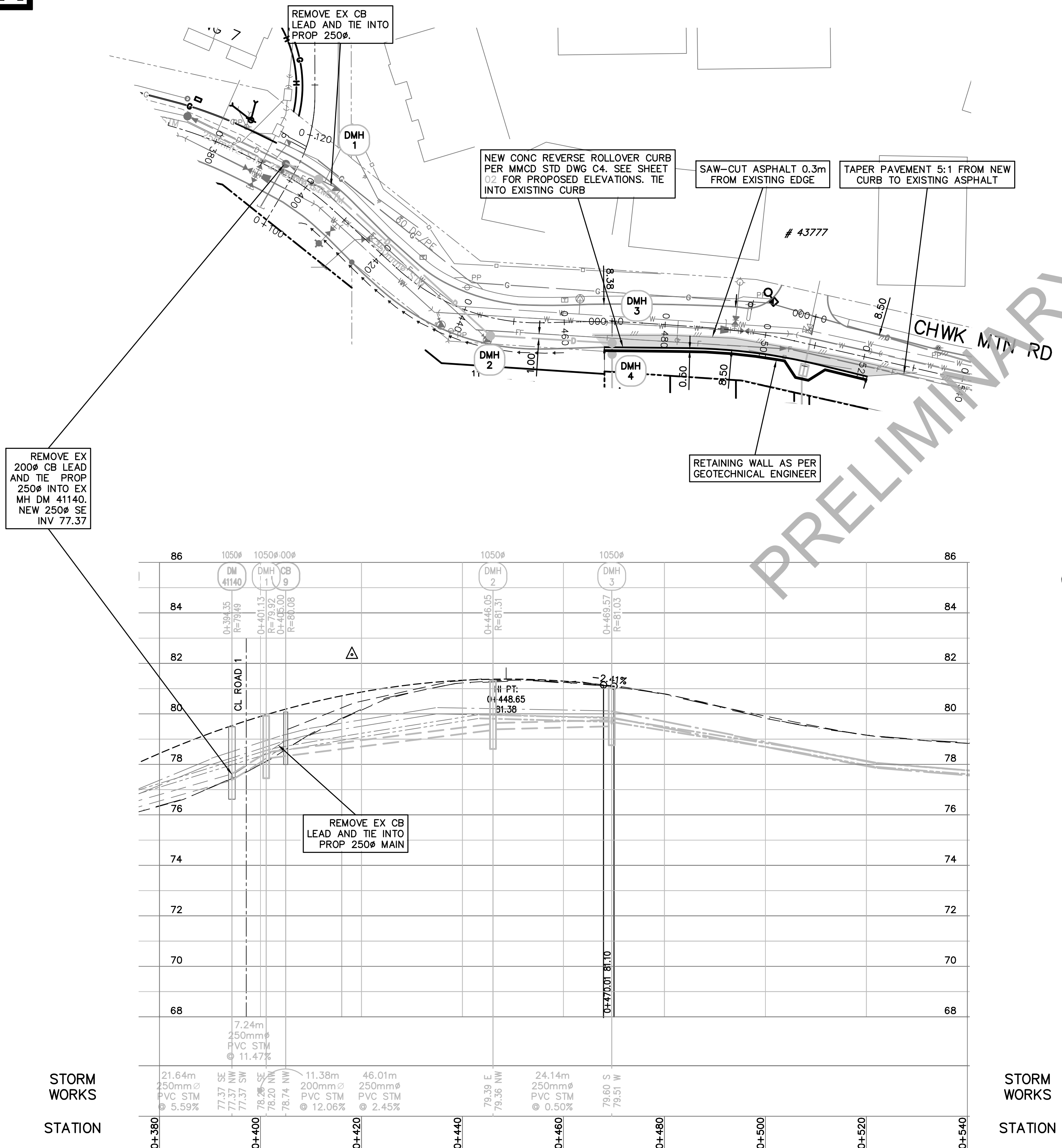


THE WEDLER GROUP

- Abbotsford
1.604.746.0300
- Chilliwack
1.604.792.0651
- Courtenay
1.250.334.3263
- Surrey
1.604.588.1919

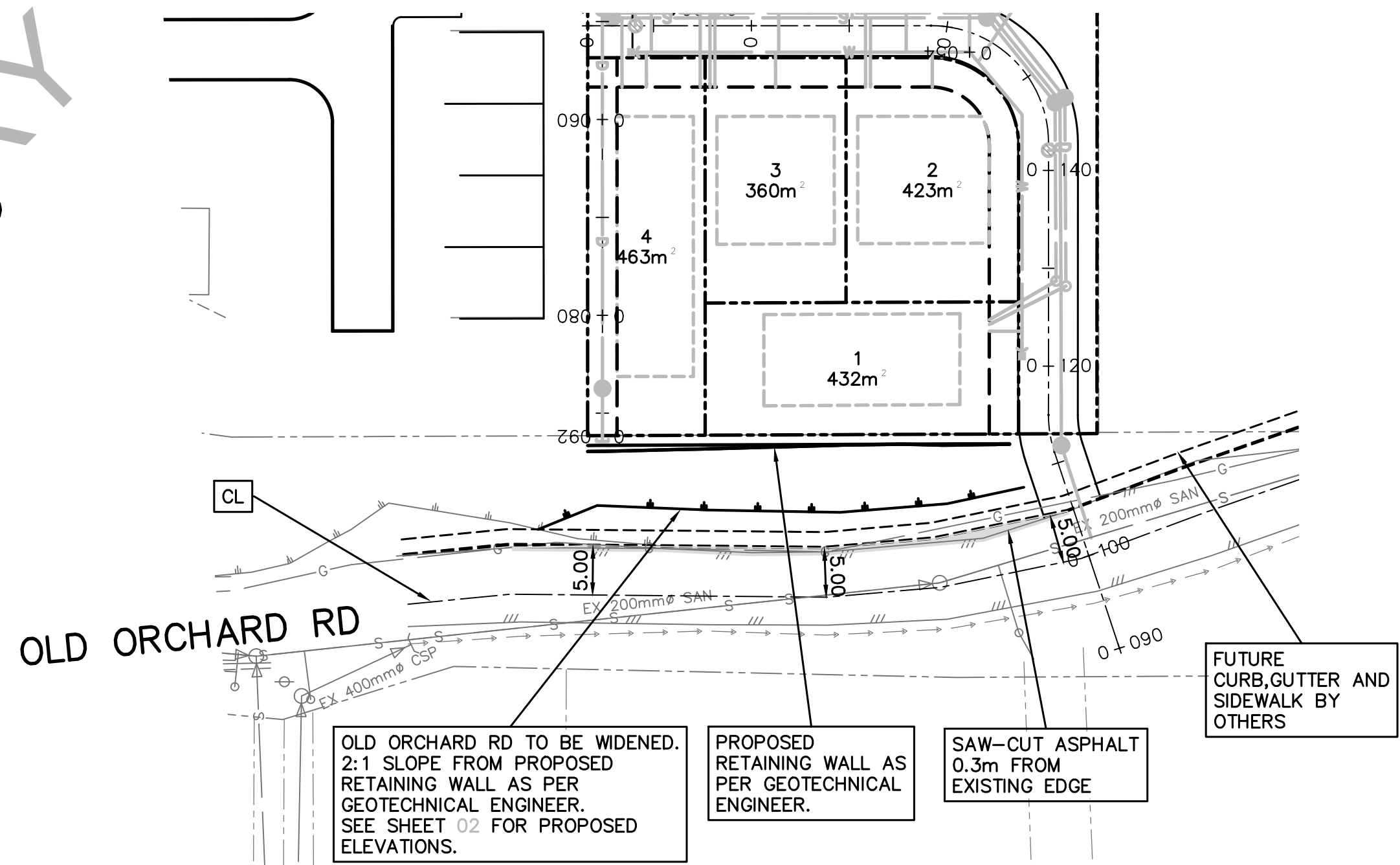
FREEDOM CONSTRUCTION
8 LOT STRATA
43730 OLD ORCHARD RD
STORM AND ROAD PLAN AND PROFILE

DRAWING NO.		OF	-5-
C17-5512/A-04			
LOCAL GOVERNMENT FILE -FILE-			
PHASE		REVISION A	



BEFORE YOU DIG

INFORMATION ON THE DRAWINGS REGARDING EXISTING UTILITIES WAS COMPILED FROM MUNICIPAL RECORD DRAWINGS AND FIELD SURVEYS. THIS INFORMATION IS NOT NECESSARILY ACCURATE OR COMPLETE. IT IS THE CONTRACTOR'S RESPONSIBILITY TO VERIFY ALL DATA BY EXPOSURE PRIOR TO ANY CONSTRUCTION AND TO IMMEDIATELY REPORT ANY DISCREPANCIES TO WEDLER ENGINEERING. PRIOR TO CONSTRUCTION, ALL TIE-IN INVERTS SHALL BE CONFIRMED, AND EXPOSURES PERFORMED WHERE THERE IS POTENTIAL FOR CONFLICTS BETWEEN EXISTING AND PROPOSED SERVICES. ANY COSTS RESULTING FROM THE CONTRACTOR'S FAILURE TO DO SO SHALL BE AT THE CONTRACTOR'S EXPENSE.



STORM
WORKS
STATION

STORM
WORKS
STATION

LEGAL:	A	ISSUED FOR REVIEW			2019-01-16	CAJ																																																																																																																																																																																																																																																																																																																																																																																																																																																																																																																																																																																																																																																																																																																																																																																																																																																																																																																																																																																																																																																																																																																																																																																																																																																																																																																																																																																																																																															
--------	---	-------------------	--	--	------------	-----	--	--	--	--	--	--	--	--	--	--	--	--	--	--	--	--	--	--	--	--	--	--	--	--	--	--	--	--	--	--	--	--	--	--	--	--	--	--	--	--	--	--	--	--	--	--	--	--	--	--	--	--	--	--	--	--	--	--	--	--	--	--	--	--	--	--	--	--	--	--	--	--	--	--	--	--	--	--	--	--	--	--	--	--	--	--	--	--	--	--	--	--	--	--	--	--	--	--	--	--	--	--	--	--	--	--	--	--	--	--	--	--	--	--	--	--	--	--	--	--	--	--	--	--	--	--	--	--	--	--	--	--	--	--	--	--	--	--	--	--	--	--	--	--	--	--	--	--	--	--	--	--	--	--	--	--	--	--	--	--	--	--	--	--	--	--	--	--	--	--	--	--	--	--	--	--	--	--	--	--	--	--	--	--	--	--	--	--	--	--	--	--	--	--	--	--	--	--	--	--	--	--	--	--	--	--	--	--	--	--	--	--	--	--	--	--	--	--	--	--	--	--	--	--	--	--	--	--	--	--	--	--	--	--	--	--	--	--	--	--	--	--	--	--	--	--	--	--	--	--	--	--	--	--	--	--	--	--	--	--	--	--	--	--	--	--	--	--	--	--	--	--	--	--	--	--	--	--	--	--	--	--	--	--	--	--	--	--	--	--	--	--	--	--	--	--	--	--	--	--	--	--	--	--	--	--	--	--	--	--	--	--	--	--	--	--	--	--	--	--	--	--	--	--	--	--	--	--	--	--	--	--	--	--	--	--	--	--	--	--	--	--	--	--	--	--	--	--	--	--	--	--	--	--	--	--	--	--	--	--	--	--	--	--	--	--	--	--	--	--	--	--	--	--	--	--	--	--	--	--	--	--	--	--	--	--	--	--	--	--	--	--	--	--	--	--	--	--	--	--	--	--	--	--	--	--	--	--	--	--	--	--	--	--	--	--	--	--	--	--	--	--	--	--	--	--	--	--	--	--	--	--	--	--	--	--	--	--	--	--	--	--	--	--	--	--	--	--	--	--	--	--	--	--	--	--	--	--	--	--	--	--	--	--	--	--	--	--	--	--	--	--	--	--	--	--	--	--	--	--	--	--	--	--	--	--	--	--	--	--	--	--	--	--	--	--	--	--	--	--	--	--	--	--	--	--	--	--	--	--	--	--	--	--	--	--	--	--	--	--	--	--	--	--	--	--	--	--	--	--	--	--	--	--	--	--	--	--	--	--	--	--	--	--	--	--	--	--	--	--	--	--	--	--	--	--	--	--	--	--	--	--	--	--	--	--	--	--	--	--	--	--	--	--	--	--	--	--	--	--	--	--	--	--	--	--	--	--	--	--	--	--	--	--	--	--	--	--	--	--	--	--	--	--	--	--	--	--	--	--	--	--	--	--	--	--	--	--	--	--	--	--	--	--	--	--	--	--	--	--	--	--	--	--	--	--	--	--	--	--	--	--	--	--	--	--	--	--	--	--	--	--	--	--	--	--	--	--	--	--	--	--	--	--	--	--	--	--	--	--	--	--	--	--	--	--	--	--	--	--	--	--	--	--	--	--	--	--	--	--	--	--	--	--	--	--	--	--	--	--	--	--	--	--	--	--	--	--	--	--	--	--	--	--	--	--	--	--	--	--	--	--	--	--	--	--	--	--	--	--	--	--	--	--	--	--	--	--	--	--	--	--	--	--	--	--	--	--	--	--	--	--	--	--	--	--	--	--	--	--	--	--	--	--	--	--	--	--	--	--	--	--	--	--	--	--	--	--	--	--	--	--	--	--	--	--	--	--	--	--	--	--	--	--	--	--	--	--	--	--	--	--	--	--	--	--	--	--	--	--	--	--	--	--	--	--	--	--	--	--	--	--	--	--	--	--	--	--	--	--	--	--	--	--	--	--	--	--	--	--	--	--	--	--	--	--	--	--	--	--	--	--	--	--	--	--	--	--	--	--	--	--	--	--	--	--	--	--	--	--	--	--	--	--	--	--	--	--	--	--	--	--	--	--	--	--	--	--	--	--	--	--	--	--	--	--	--	--	--	--	--	--	--	--	--	--	--	--	--	--	--	--	--	--	--	--	--	--	--	--	--	--	--	--	--	--	--	--	--	--	--	--	--	--	--	--	--	--	--	--	--	--	--	--	--	--	--	--	--	--	--	--	--	--	--	--	--	--	--	--	--	--	--	--	--	--	--	--	--	--	--	--	--	--	--	--	--	--	--	--	--	--	--	--	--	--	--	--	--	--	--	--	--	--	--	--	--	--	--	--	--	--	--	--	--	--	--	--	--	--	--	--	--	--	--	--	--	--	--	--	--	--	--	--	--	--	--	--	--	--	--	--	--	--	--	--	--	--	--	--	--	--	--	--	--	--	--	--	--	--	--	--	--	--	--	--	--	--	--	--	--	--	--	--	--	--	--	--	--	--	--	--	--	--	--	--	--	--	--	--	--	--	--	--	--	--	--	--	--	--	--	--	--	--	--	--	--	--	--	--	--	--	--	--	--	--	--	--	--	--	--	--	--	--	--	--	--	--	--	--	--	--	--	--	--	--	--	--	--	--	--	--	--	--	--	--	--	--	--	--	--	--	--	--	--	--	--	--	--	--	--	--	--	--	--	--	--	--	--	--	--	--	--	--	--	--	--	--	--	--	--	--	--	--	--	--	--	--	--	--	--	--	--	--	--	--	--	--	--	--	--	--	--	--	--	--	--	--	--	--	--	--	--	--	--	--	--	--	--	--	--	--	--	--	--	--	--	--	--	--	--	--	--	--	--	--	--	--	--	--	--	--	--	--	--	--	--	--	--	--	--	--	--	--	--	--	--	--	--	--	--	--	--	--	--	--	--	--	--	--	--	--	--	--	--	--	--	--	--	--	--	--	--	--	--	--	--	--	--	--	--	--	--	--	--	--	--	--	--	--	--	--	--	--	--	--	--	--	--	--	--	--	--	--	--	--	--	--	--	--	--	--	--	--	--	--	--	--	--	--	--	--	--	--	--	--	--	--	--	--	--	--	--	--	--	--	--	--	--	--	--	--	--	--	--	--	--	--	--	--	--	--	--	--	--	--	--	--	--	--	--	--	--	--	--	--	--	--	--	--	--	--	--	--	--	--	--	--	--	--	--	--	--	--	--	--	--	--	--	--	--