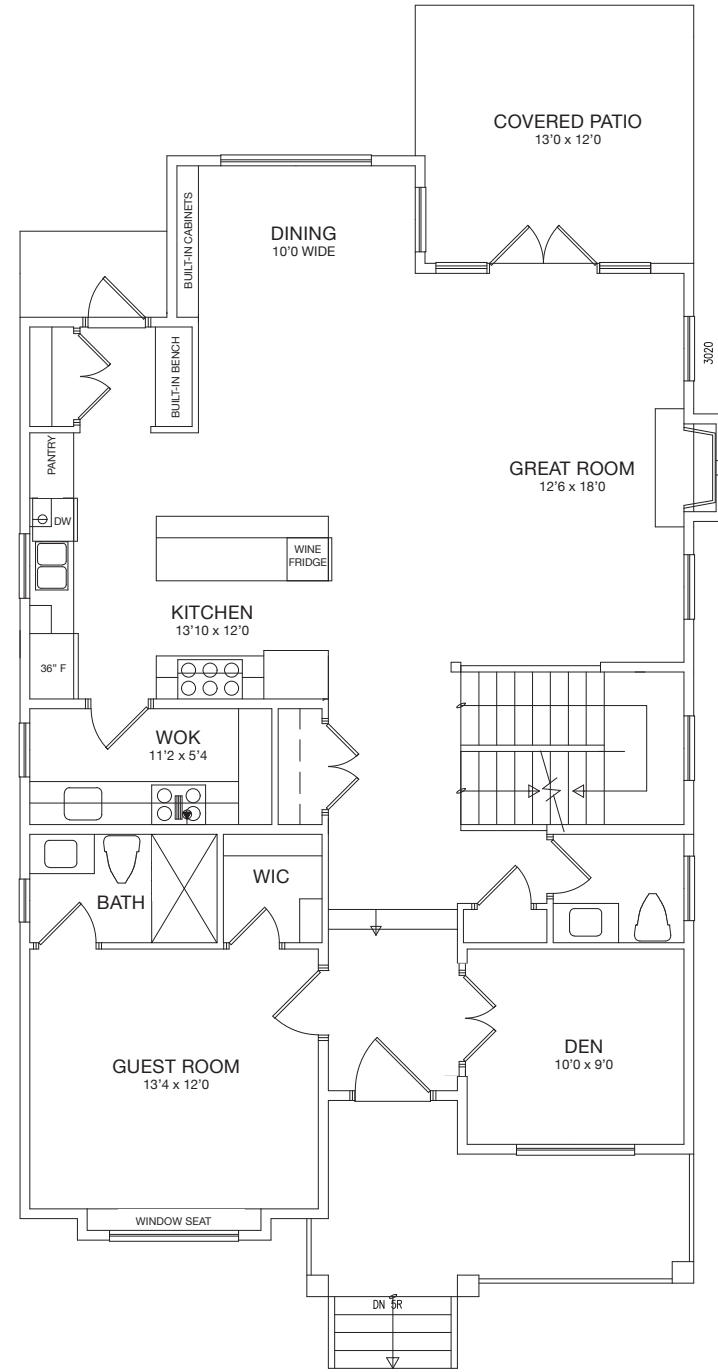
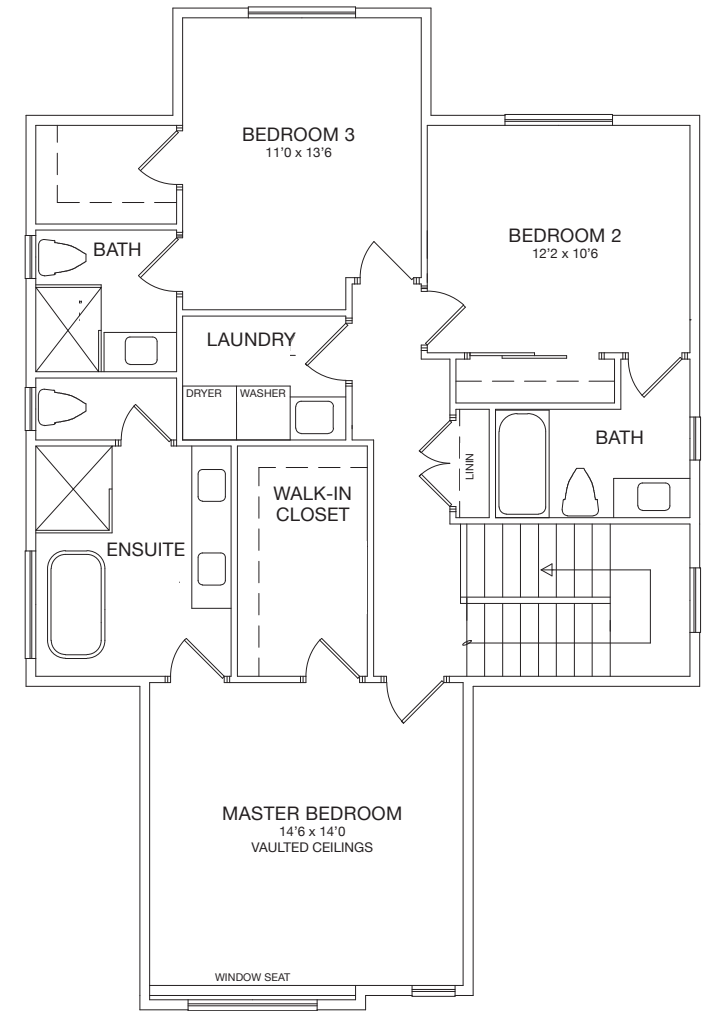


BASEMENT TOTAL AREA: 1369 S.F.
SUITE AREA: 968 S.F.
CEILING HEIGHT: 9' HIGH



MAIN TOTAL AREA: 1369 S.F.
CEILING HEIGHT: 10' HIGH

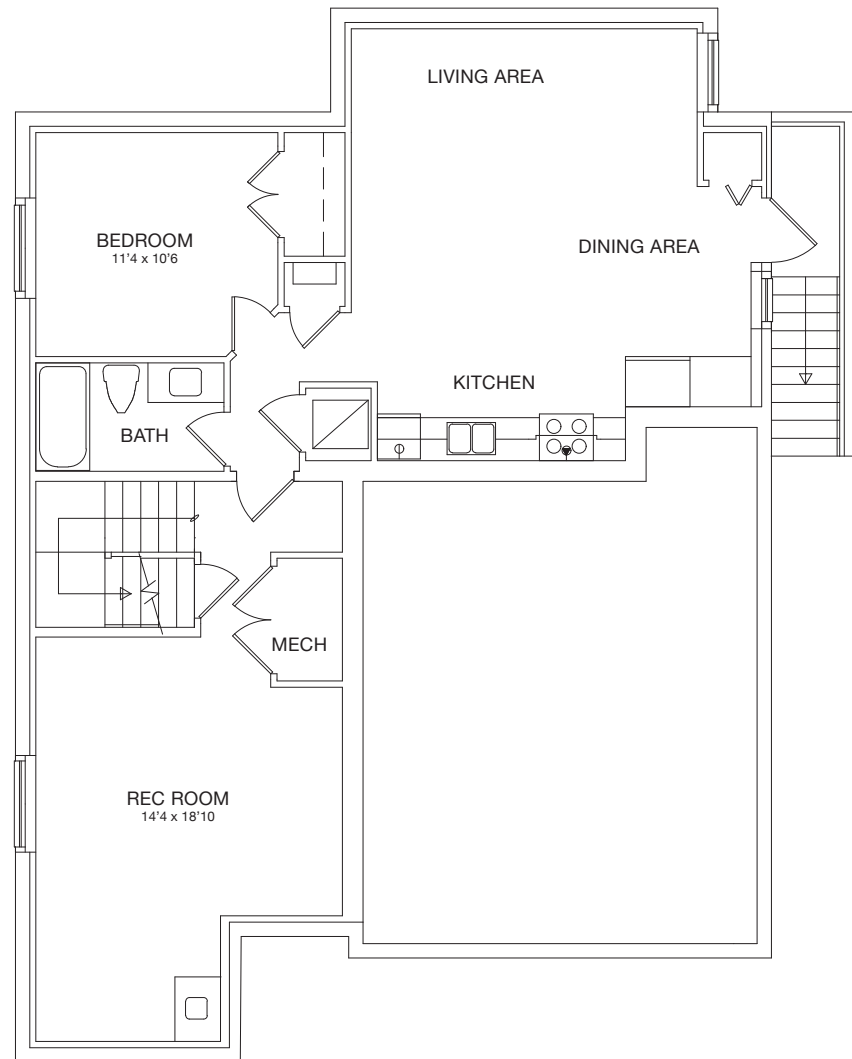


UPPER TOTAL AREA: 1033 S.F.
CEILING HEIGHT: 9' HIGH

The Builder reserves the right to make modifications and changes to the building design, elevations, dimensions, specifications, features and prices, without prior notification. Decks, patios, stairs and windows may vary based on site conditions. Variances may include materials, sizes, and/or locations as well as the number of steps into and out of the home. All sizes and dimensions are approximate and based on Architectural measurements. Reverse and/or mirror plans occur throughout the development. Renderings are artist's conception and intended as a general reference only. See the sales representative for details. E. & O.E.

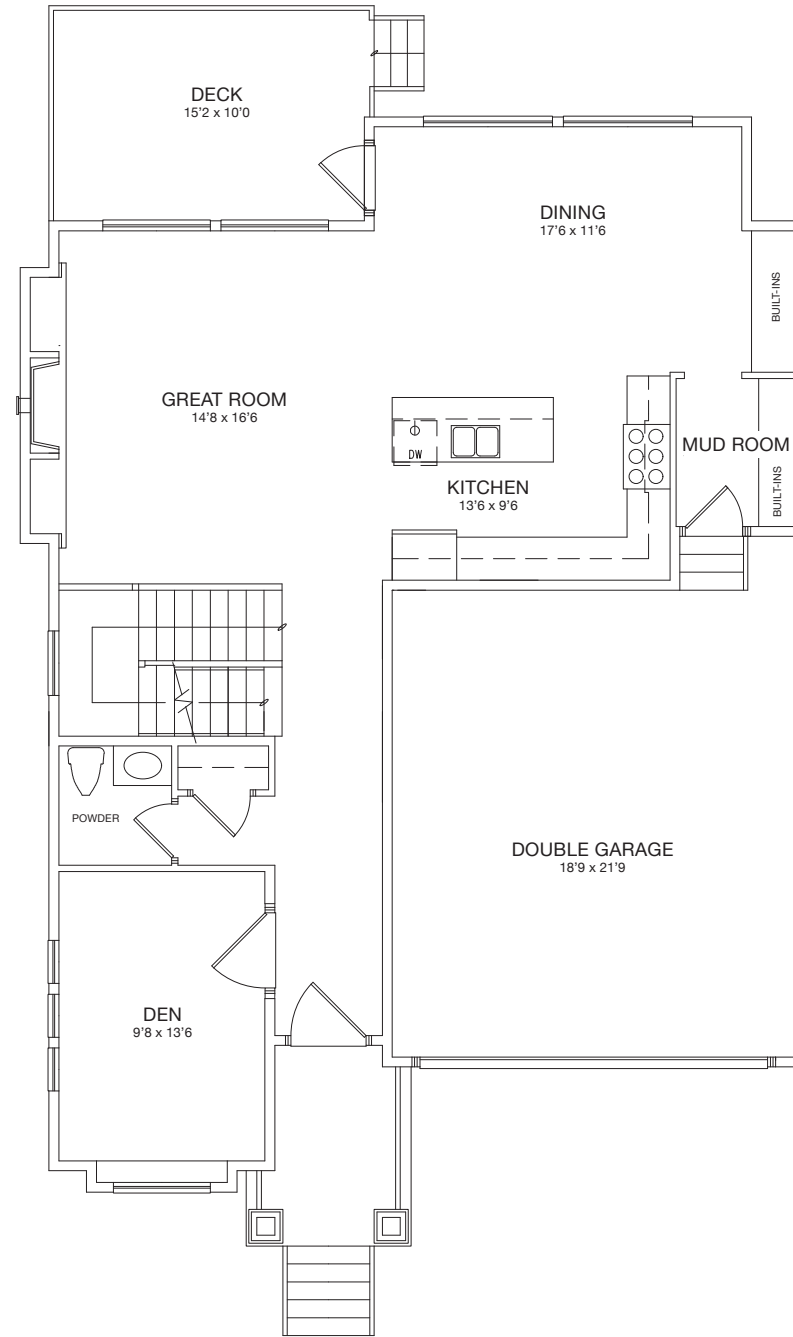
PLAN B

4/5 BEDS / 4-1/2 BATHS 3,270 SF



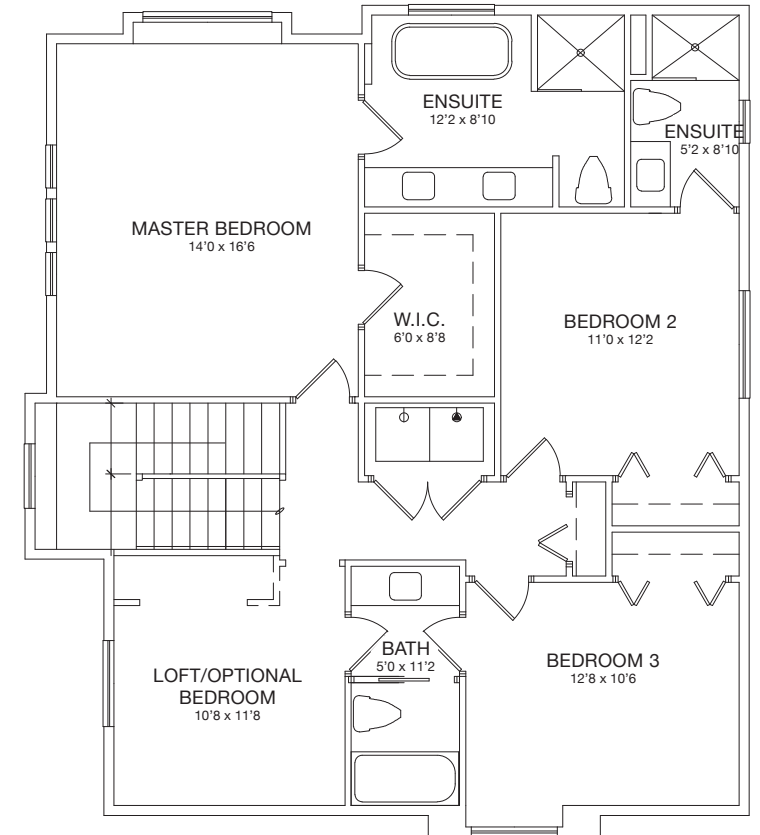
BASEMENT

TOTAL AREA: 1079 S.F.
SUITE AREA: 667 S.F.
CEILING HEIGHT: 8' HIGH



MAIN

AREA: 1086 S.F.
GARAGE AREA: 441 S.F.
CEILING HEIGHT: 10' HIGH



UPPER

AREA: 1105 S.F.
CEILING HEIGHT: 9' HIGH

The Builder reserves the right to make modifications and changes to the building design, elevations, dimensions, specifications, features and prices, without prior notification. Decks, patios, stairs and windows may vary based on site conditions. Variances may include materials, sizes, and and/or locations as well as the number of steps into and out of the home. All sizes and dimensions are approximate and based on Architectural measurements. Reverse and/or mirror plans occur throughout the development. Renderings are artist's conception and intended as a general reference only. See the sales representative for details. E. & O.E.